



MA5600

Port Types

The MA5600 provides various network ports, service ports, and maintenance ports to meet different networking requirements.

[Table 1](#) lists the ports provided by the MA5600.

Table 1 Ports provided by the MA5600		
Port Type	Port Name	Remarks
Network port	FE optical and electrical port	<p>The network port supports the electrical port, single-mode optical port, and multi-mode optical port. They are used to:</p> <ul style="list-style-type: none"> • Connect to the upper layer device. • Subtend shelf.
	GE optical and electrical port	
Service port	ADSL2+ port	<p>It is compatible with ADSL, and its performance is better than ADSL with respect to:</p> <ul style="list-style-type: none"> • Higher rate. • Longer distance. • Lower power consumption. • More stable operation.
	SHDSL port	<p>It supports the symmetrical transmission.</p> <p>The transmission reach ranges from 3 km to 6</p>

Table 1 Ports provided by the MA5600

Port Type	Port Name	Remarks
		km.
	VDSL2 port	It supports: <ul style="list-style-type: none"> Discrete multi-tone (DMT) technology. Compatibility with ADSL2+.
	Ethernet port	It provides subtending of the MA5600 shelves.
	ATM port	It supports: <ul style="list-style-type: none"> STM-1 port. IMA port. ATM access.
Maintenance port	Maintenance serial/network port	These ports are used for local and remote maintenance.
	Environment monitoring port	Through the port, various environment parameters collected by the monitoring device are reported to the host.

Product Orientation

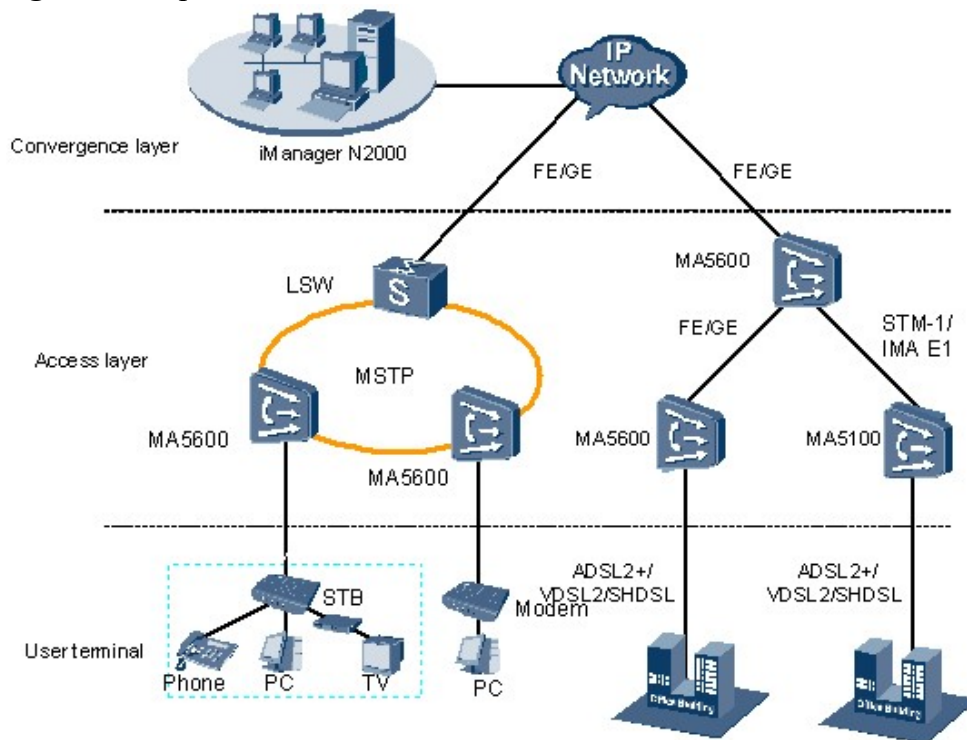
With the growing requirements for telecom services, the access network (AN) must provide integrated services with large capacity, high rate, and high quality (including data, video, voice, and multimedia). To meet these requirements, Huawei has launched the SmartAX MA5600 Multi-service Access Module.

The MA5600 has the following orientations:

- As an IP digital subscriber line access multiplexer (DSLAM), it supports non-blocking gigabit Ethernet (GE) switching fabric to suit the high rate requirements of the broadband telecom network.
- As a multi-service access module, it provides integrated service access to address the diversified service requirements of telecom subscribers.
- As a next generation network (NGN) solution, it provides ensured quality of service (QoS) to be ready for evolving to the next generation network.

[Figure 1](#) shows a sample network of the MA5600.

Figure 1 Sample network of the MA5600



The MA5600 supports indoor cabinets and outdoor cabinets. Each type of cabinet is different in detailed model, appearance, and hardware configuration.

Cabinet Overview

[Table 1](#) provides the types and the appearance of the commonly used MA5600 cabinets.

Table 1 Types and appearance of the commonly used MA5600 cabinets


Cabinet Model	Type	Appearance
H66-18	Indoor	
N66-22	Indoor	

Table 1 Types and appearance of the commonly used MA5600 cabinets

Cabinet Model	Type	Appearance
---------------	------	------------



Table 1 Types and appearance of the commonly used MA5600 cabinets

Cabinet Model	Type	Appearance
F01D200	Outdoor	
F01D500	Outdoor	
F01E400	Outdoor	

Table 1 Types and appearance of the commonly used MA5600 cabinets

Cabinet Model	Type	Appearance
		

Cabinet Configuration and Capacity

[Table 2](#) provides the hardware configuration and the capacity of the MA5600 cabinets.

Table 2 Hardware configuration and capacity of the MA5600 cabinets			
Cabinet Model	Dimensions (W x D x H)	Service Configuration	Maximum ADSL Subscribers
H66-18	600mm×600mm×1800mm	1 service shelf + 1 SPL shelf	896
		2 service shelves	1792

Table 2 Hardware configuration and capacity of the MA5600 cabinets

Cabinet Model	Dimensions (W x D x H)	Service Configuration	Maximum ADSL Subscribers
N66-22	600mm×600mm×2200mm	1 service shelf + 1 SPL shelf	896
		1 service shelf + 2 SPL shelf	1792
		3 service shelves	2688
F01D200	1250mm×550mm×1200mm	1 service shelf	256
F01D500	1550mm×550mm×1550mm	1 service shelf	512
F01E400	1000mm×550mm×1200mm	1 service shelf	384